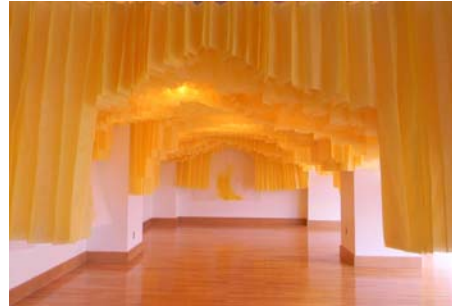




Craft Alliance Grand Center Gallery



Installation Artists Opportunity – Call for Proposals

Proposals being accepted for 2013/2014 solo/collaborative exhibitions in craft materials at new urban gallery, in Grand Center, St. Louis, Missouri.

Exhibition Project Description

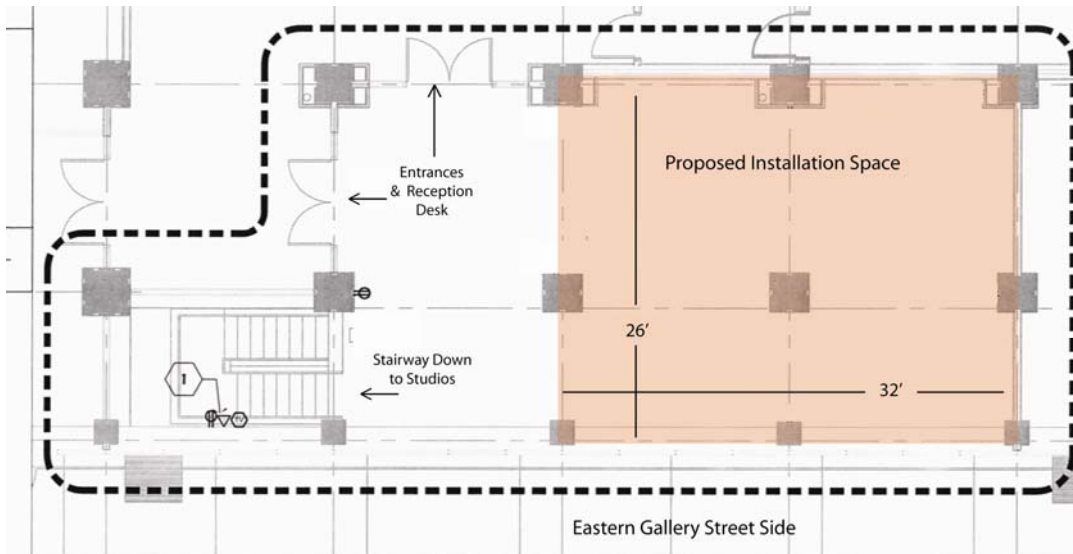


The proposed exhibition space will enable Craft Alliance to present site-specific installation pieces that use craft techniques to create spatial environments and that bridge the line between craft and fine art as well as experimental or multi-media craft work. Craft Alliance will present the St. Louis community with exhibitions which challenge conventional notions of craft and which broaden the understanding of the vital role of craft mediums in contemporary art.

The installation should visual transform the 750 square foot space. We would like to challenge each submitting artist to look at the layout of the gallery and design work that engages the whole space as a site-specific installation while considering the viewer's relationship to the work and how one approaches and encounters the piece.

The size of the gallery space is approximately 1000 square feet with 750 square feet dedicated to installation space, with floor to ceiling pillars every 14 feet. (See the inset rendering). The gallery has 8' storefront windows on the full eastern street side, 26 running feet of wall space on north side and 32 feet on west side. The ceiling height is approximately 12 feet. There is limited access to the ceiling. *Please contact exhibitions@craftalliance.org for a more detailed floor plan.*

The artist is allowed approximately 10 days to install the work. The proposal must include an outline of installation process, carefully estimated budget (including artist stipend, transportation, travel and de-installation), and process of de-installation. Artist must include



drawings of how the work will fit in the space, taking in to consideration the columns and front windows. Craft Alliance encourages the artist to come and visit the space and get to know the surrounding St. Louis community.

The images above are of New Work by Michael Shaughnessy; Carrie Scanga Breathe; Guerra de la Paz: Follow the Leader. (Insert) Mikyoung Lee: Bound Visions.



DELMAR LOOP • 6640 Delmar Blvd • St. Louis, MO 63130 • 314.725.1177
GRAND CENTER • 501 N Grand Blvd • St. Louis, MO 63103 • 314.534.7528



Craft Alliance Grand Center Gallery

Craft Alliance will offer 2 exhibitions per year. *Applications are accepted on rolling bases through December 2009.*

Artist proposals must include the following:

- One- two page outline of installation process, estimated budget, and de-installation.
- 1 – 2 Sketches, photographs or drawings of how the proposal would fit into the gallery space.
- Current professional biography and resume.
- 8 – 15 images of current work and specific samples of work related to installation proposal. *Images accepted: digital images on PC compatible CD. JPEG format with 300 DPI. Please label the CD with artist name and date. Work must have been completed in the last 5*

years. For video work please submit a DVD with artist's name and date.

- Image list must be included in proposal. Please provide the following information: artist name, title of work, medium, date completed and size.
- Send to: Craft Alliance
Attn: Director of Exhibitions
6640 Delmar Blvd.
St. Louis, MO 63130
- For questions email: exhibitions@craftalliance.org or call 314.725.1177 ext 323

About Craft Alliance

Craft Alliance was founded in 1964 as a cooperative gallery, and has been at its present location at 6640 Delmar Blvd. in University City, since 1969. At this location, Craft Alliance offers classes to all levels in clay, glass, metal, wood and fiber arts, maintains an exhibition gallery that and has a retail space that offers the work of over 300 craft artists. Craft Alliance educates the community about contemporary craft through exhibitions, outreach programs, and classes and workshops that embody our core values of quality, inclusiveness, artistic freedom, and the highest ethical and professional standards.



Craft Alliance has opened a 6,000 square foot satellite in Grand Center in the Kranzberg Cultural Art Center, located in the historical Woolworth Building, near the Fox Theatre. The two level satellite location features a large street level exhibition space with access to a lower level education center and studios. Craft Alliance's Grand Center satellite has three major components: an exhibition series, community outreach programming, and educational programming that include studio classes and an artist residency program. This satellite offers Craft Alliance the opportunity to reach new urban audiences with expanded outreach programming, educational and exhibition programs, and partnerships with other art and educational organizations in the Grand Center area. The exhibition gallery provides the regional community with greater exposure to contemporary craft and the techniques involved through the work of emerging and nationally recognized artists. With street level visibility in a developing city arts center, Craft Alliance will reach over 20,000 visitors per year. Our strong collector base developed at the Delmar Loop site will continue to be patrons at our Grand Center site.



DELMAR LOOP • 6640 Delmar Blvd • St. Louis, MO 63130 • 314.725.1177
GRAND CENTER • 501 N Grand Blvd • St. Louis, MO 63103 • 314.534.7528